

# ShowVision DJ 100

## Installation Instructions

Welcome to your new ShowVision DJ 100 LED effects curtain. ShowVision's EasyLink system uses LEDShowT9 software to transmit video via a 1Gbps network card to your new LED effects curtain.

The LEDShowT9 needs to be downloaded from the ShowVision web site and is free of charge. Go to [www.ShowVisionLED.com/download/t9.zip](http://www.ShowVisionLED.com/download/t9.zip) to download your copy.

### Package contents:

- 1 - 3.2m x 1.6m ShowVision DJ 100
- 1- EasyLink Controller
- 1- CAT 5 Ethernet Cable
- 1- Quick Start Guide

### System Requirements

- Microsoft Windows® XP SP1 or better
- Intel 1 GHz Pentium or equivalent
- 256 MB of available RAM
- 20 MB of hard disk space
- Internet connection to download software

### ShowVision DJ 100 Assembly

1. Connect the EasyLink Signal Output 1 cord to the Signal 1 on the ShowVision curtain. Tighten both ends together.
2. Connect the EasyLink 5v cord to the 5v connector on the ShowVision curtain. Tighten both ends together



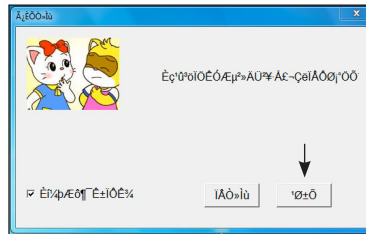
3. Plug the provided CAT 5 ethernet cable in to the Signal Input jack on the EasyLink controller.
4. Connect the other end of the ethernet cable to your 1 Gbps network card on your computer.
5. Plug in the ShowVision DJ 100 Effects Curtain.

### Installing LEDShowT9:

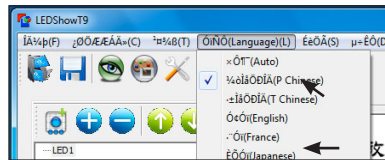
1. Click on the T9\_Setup icon
2. Follow the on screen instructions

### First Time Setup:

1. To start the software click the LEDShowT9 icon that has been placed on your desktop
2. LEDShowT9 supports several languages. By default Chinese is selected causing the initial welcome window to display random characters for some people. Click the right hand button.



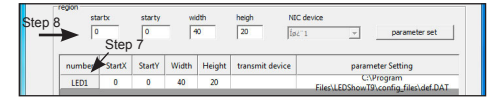
3. From the language menu select the desired language then click yes. The program will restart in your selected language.



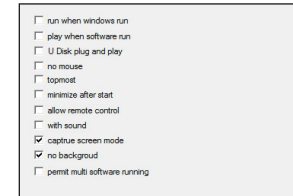
4. Click Close
5. From the Control menu select LED Admin
6. Click on NIC1 and select the network card your EasyLink controller is connected to.



7. Click on LED1 in the grid below.
8. In the region area enter 40 for the width and 20 for the height. The LED position window will shrink to the entered dimensions.



9. Close the window.
10. From the Setting menu select Software Setting.
11. Place a check mark next to Capture Screen Mode and No Background.



12. Click OK to accept.
13. You are now ready to start capturing the screen.

### Starting Capture Mode:

1. By default the capture window starts at screen position 0,0. Most VJ packages start at this position for their output windows.
2. If you wish to move the capture window, simply drag it to a new position.
3. To start transmitting click the Play button.
4. The T9 control panel can be minimized.

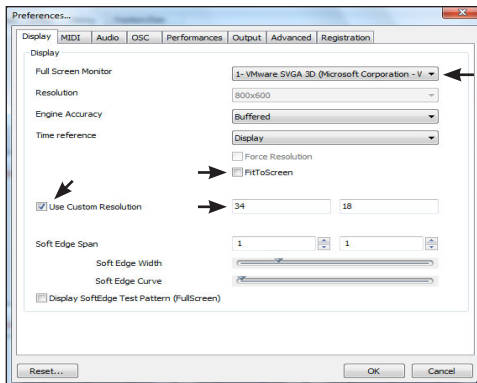
Although not provided, the ShowVision DJ 100 LED Effects Curtain has been tested and is compatible with VJ packages such as Arkaos, MADRIX, and Cell DNA. Any VJ or visualizer packages that support a scalable output window is compatible.

## Displaying video with LEDShowT9

1. Click the blue plus button and select Normal Page
2. Click on Normal Page then the blue plus button
3. Select File Window
4. Change your start X and Y to 0
5. Change the width to 34 and the height to 18
6. Click on File Window in the list window
7. Click the blue plus button again and select the type of file you wish to display
8. Select your file and click open
9. To add additional videos or pictures repeat steps 6-8
10. Click the Play button to start the video

## Using DJ 100 with ArKaos Grand VJ

1. From the File menu select Preferences
2. Uncheck Fit to Screen
3. Check Use Custom Resolution and enter 34 and 18



4. Click OK
5. To start sending video to the ShowVision DJ 100 click the Toggle Full Screen button or CTRL+F

Computerized Lighting Productions, LLC  
627 Elliott Street  
Grand Haven, MI 49417 USA  
Phone: 616-402-3330

Email: [info@computerizedlighting.com](mailto:info@computerizedlighting.com)  
MSN: [info@computerizedlighting.com](mailto:info@computerizedlighting.com)  
[www.ShowVisionLED.com](http://www.ShowVisionLED.com)